

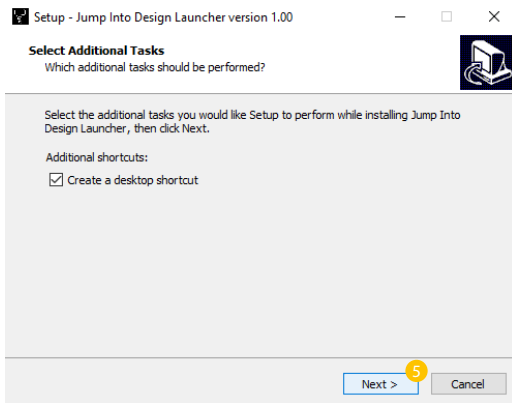
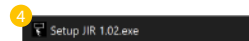
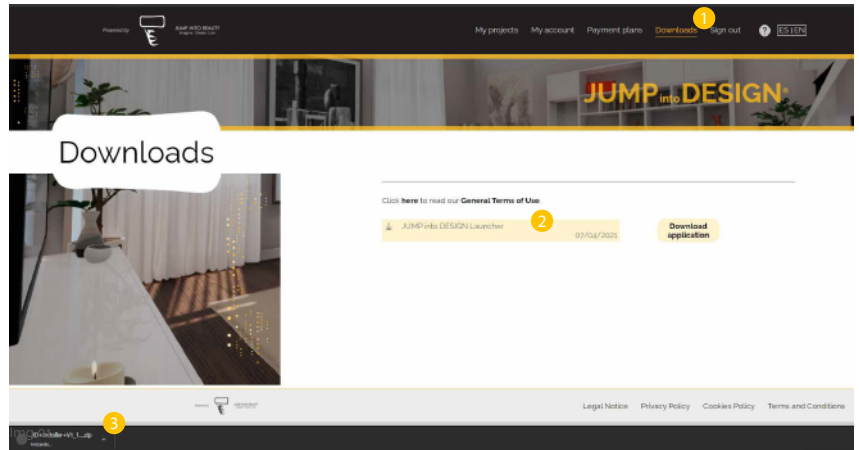
JUMP into DESIGN[®]

INSTALLATION GUIDE



01

If you have signed up but have not yet downloaded the application, you may do so by going to "Downloads" (1) in the main menu. Click on "Download application" button (2) and the download will begin. (3)



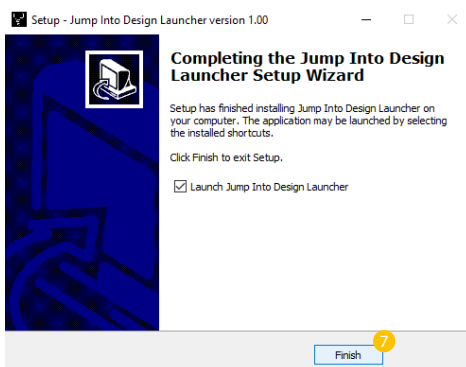
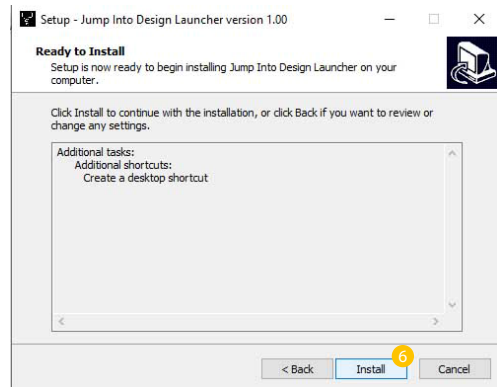
02

Once the download is finished and the content of the .zip file is examined, double-click on the file it contains (4) and a window with the installer will pop up.

Continue with the installation by clicking "Next>" (5).

03

Click on "Install" (6) and wait for the process to finish.



04

Click on "Finish" (7) to start the launcher.

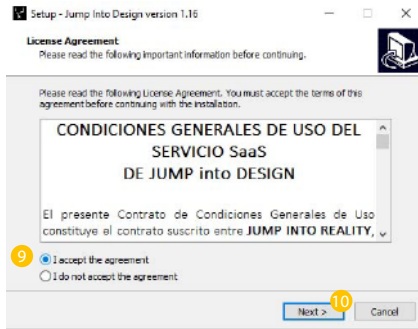
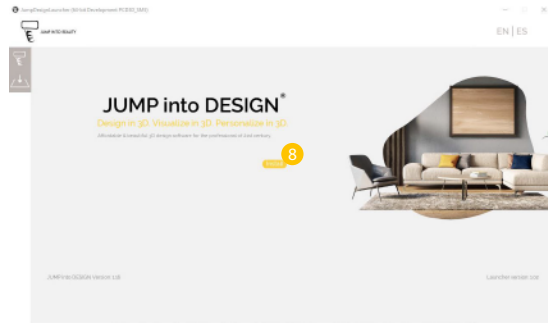
(*) Depending on your Windows security settings, you may get a security warning, accept it to continue with the installation.

Note: The application will detect if you need any add-on in order to work properly on your computer. If this happens, just follow the suggestions and click "next" or consult our "Guide to solving common problems."

05

The launcher pop-up window will appear.

Click on the "Install" button (8) to start the installation of **JUMP into DESIGN** and wait for the process to finish.

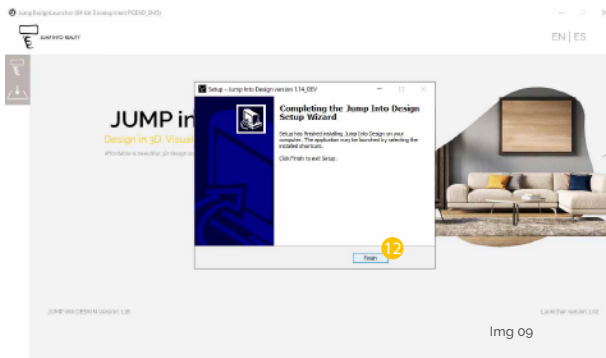
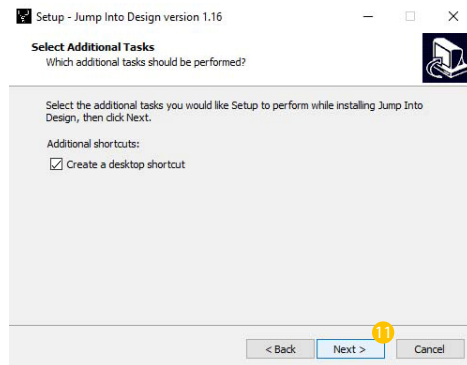


06

A window will pop up, where you must **accept the license agreement** (9). Then continue with the installation by clicking "Next" (10).

07

Start the installation by clicking on "Next >" (11) and wait for the process to finish.



08

Finish the installation by clicking on "Finish" (12).

09

Click on "Start" (13) and start using **JUMP into DESIGN**.

